

# iRise Connect™ for HP Quality Center

## Speed Time to Market and Improve Quality with Full Application Definition Lifecycle Automation

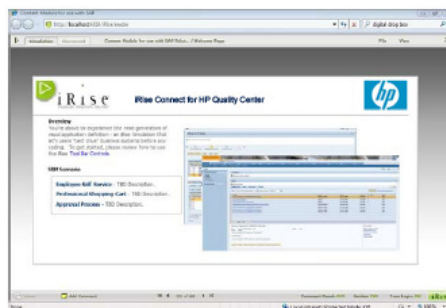
iRise Connect for HP Quality Center (HP QC) is an integration of iRise enterprise visualization with the robust requirements management and testing capabilities of HP QC. This integration empowers HP QC and iRise customers to tightly couple world-class application definition capabilities with the downstream application development lifecycle, eliminating costly rework, accelerating time to market and improving quality for a broad class of business software.

### THE PROBLEM

The key to successful software development is to capture the right business requirements up front and manage them accurately throughout the entire development process. This continues to be an enormous challenge for most companies due to the fact that business people cannot see, interact with and fully experience software until the system has already been coded and tested. And the tools used to define complex business systems have not changed in over 30 years: text documents, screen shots and use case diagrams. These artifacts are nearly impossible to understand. Downstream development and quality organizations receive incomplete information, compounding delays and cost overruns. It's no wonder that two-thirds of all projects fail. There has to be a better way.

### THE SOLUTION: INTEGRATING THE LIFECYCLE

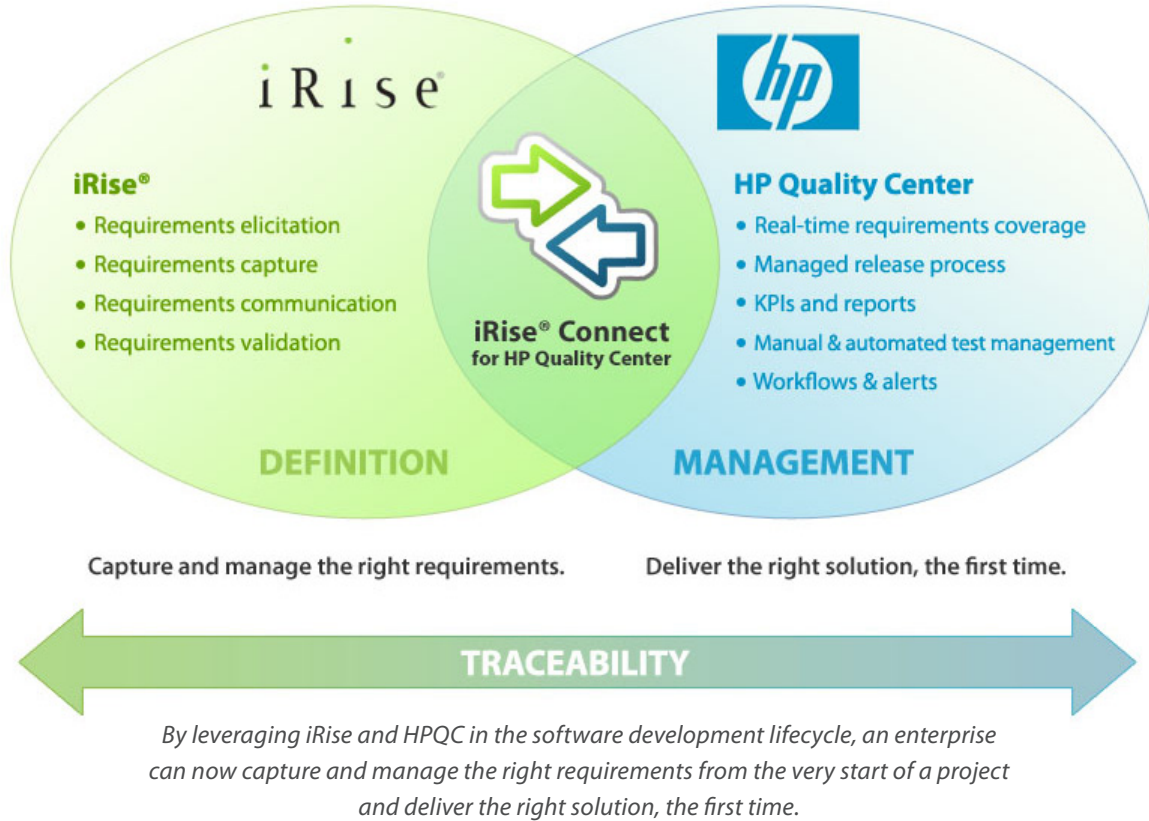
iRise Connect for HP Quality Center enables business analysts to combine the powerful application visualization capabilities in iRise to elicit and validate requirements for business software with the robust requirement traceability capabilities in HP Quality Center to track and manage requirements throughout the application development cycle. Any text-based requirements captured in iRise can be exported to HP Quality Center along with a link back to the interactive visualization in iRise and any associated screen flows and screen shots. Once in HP Quality Center, the requirements can be reviewed, revised, tracked and managed along with releases, tests, and defects. If needed, the business analyst or other users of HP Quality Center can interact with the iRise visualization from directly within the HP Quality Center environment, empowering them to resolve business requirements quickly and easily during projects. By eliminating requirements confusion early, software projects are accelerated and expensive downstream rework is avoided.



- **Export requirements from iRise directly into HP Quality Center**  
Start the downstream development and QA efforts with the right requirements
- **Bi-directional synchronization**  
Ensure that definition and development teams are on the same page
- **Automatic versioning for new, updated requirements**  
Keep the right business needs in sync
- **Reduce requirement sources by collecting in one system**  
Eliminate confusion by maintaining a single source for business needs
- **Access visualizations and iRise screens from directly within HP Quality Center**  
Improved traceability reduces mistakes and improves overall quality
- **Improved synchronization means less requirements are missed**  
Accelerate time to market and improve quality

iRise Connect for HP Quality Center also enables any text-based requirements captured in HP Quality Center to be imported into iRise along with any associated attributes. Once in iRise the requirements can be reviewed, revised, and visualized. If needed, the business analyst can click on the requirement in iRise to view associated attributes from HP Quality Center.

Any requirement additions, changes, or deletions made in either iRise or HP Quality Center can be synchronized with the other system. This way, the business analyst can focus on capturing and managing the right business requirements rather than worrying about keeping requirements up to date.



- Expands HP QC capabilities to include rich requirements definition and visualization
- Built for HP QC v 10 and iRise 8
- Simple to use import/export function facilitates the integration of requirements visualization with requirements management
- Increases traceability and efficiency while streamlining the entire SDLC process
- Eliminates rework caused by miscommunication and requirement errors

